



1  2 

Victor Kelly Estate Agents

**238-240 Enmore Rd ENMORE, NSW
RETAIL & RESIDENTIAL WITH DUAL INCOME**

Contact Cherie Kelly
0478680551
Victor Kelly
0419212810

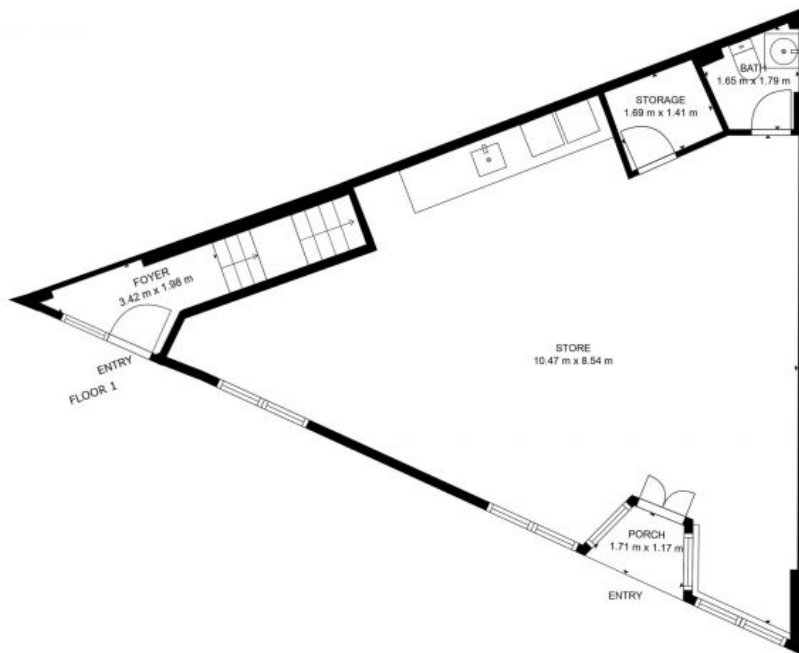
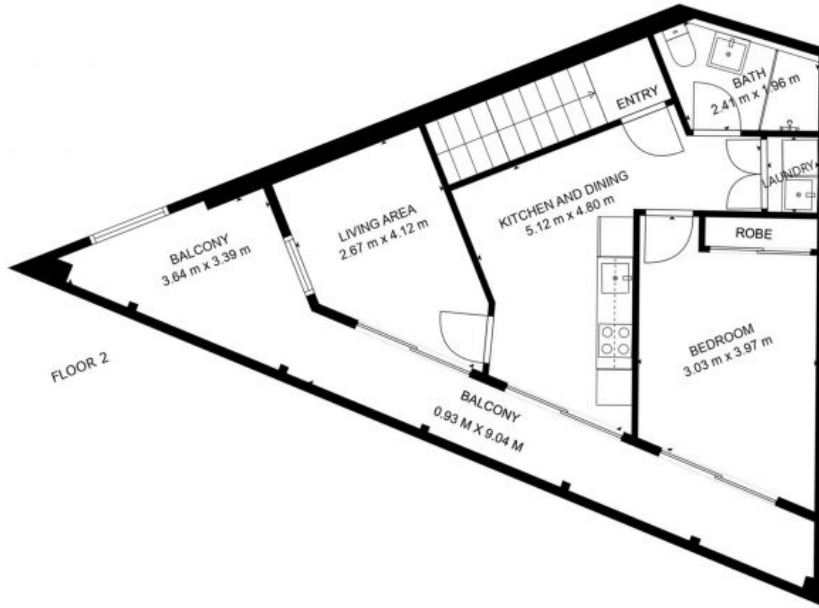
Type House

Land 76Square Metres

BRIEF SUMMARY

- Retail Current Use - Pet Bakery retail shop
- Retail Lease Term 2 Years expiring 13th September 2024
- Residential Lease Term 1 Year expiring 29th September 2024
- Land Area 76 sqm approx.
- Gross Floor Space 152 Sqm approx.
- Excellent Street Exposure 15 Metre Frontage
- High Ceilings
- Fully Tiles floors

This is a Tremendous Opportunity for an Investor or Owner-Occupier to Secure this Valuable Retail and



Plans shown are for presentation purposes only and are not part of any legal document or title. They are subject to errors, omissions, inaccuracies and should not be used as sole and accurate reference. Interested parties should make their own inquiries.



238 ENMORE RD, ENMORE

VK VICTOR KELLY
ESTATE AGENTS

238-240 Enmore Rd ENMORE, NSW

VK VICTOR KELLY
ESTATE AGENTS

Plans shown are only indicative of layout. Dimensions are approximate.