

Victor Kelly Estate Agents

Suite 205/1 Erskineville Rd NEWTOWN, NSW Modern Open-Plan Office in Newtown

Contact Cherie Kelly
0478680551

Type Offices

Land 72Square Metres

Unlock the potential of your business with this exceptional office space located in the heart of Newtown. This property offers a versatile open floor plan that caters to a variety of business needs and layouts. Bright and spacious, it's designed to inspire productivity and foster a collaborative work environment.

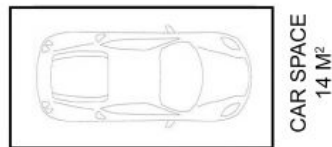
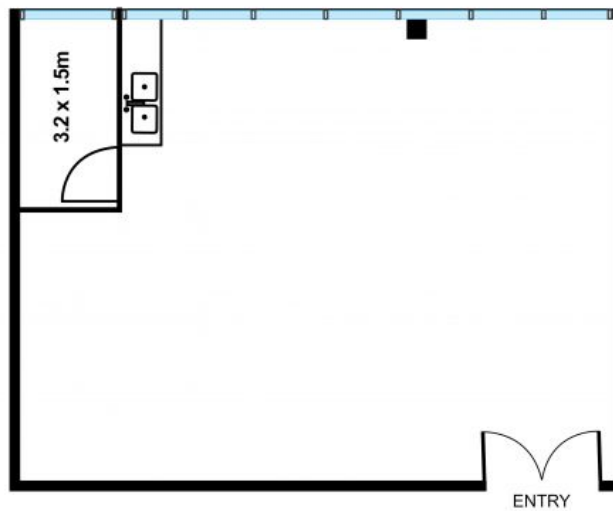
This office space is perfect for professionals, creatives, or any business looking to establish itself in Newtown's dynamic commercial landscape. With its open floor layout and practical amenities, it offers a blank canvas to create a work environment that reflects your company's identity and values.

Features Include:

? **Open Floor Plan:** A flexible workspace that can be customized to suit your business operations, whether you need individual workstations, a collaborative area, or a combination of both.

? **Kitchenette:** Keep your team fuelled and refreshed with an in-house kitchenette, perfect for quick lunches

Total Office Area - 72m² approx.
Car space - 14m²
Total on Title - 86m²



Suite 205/1 Erskineville Road, Newtown

Scale shown in metres. All dimensions herein are approximate and gathered from sources believed to be reliable. Whilst every effort is made for the accuracy of our floor plans, interested parties should rely on their own enquiries. This plan serves only as a guide for marketing purposes.

Suite 205/1 Erskineville Rd NEWTOWN, NSW

Plans shown are only indicative of layout. Dimensions are approximate.