

2  1  1 

Victor Kelly Estate Agents

**2/630-634 New Canterbury Rd HURLSTONE PARK, NSW
DEPOSIT TAKEN**

Contact Cherie Kelly
0478680551

Located in 'Fernhill', a boutique development of just 25 apartments. All offers are considered.

Type Unit

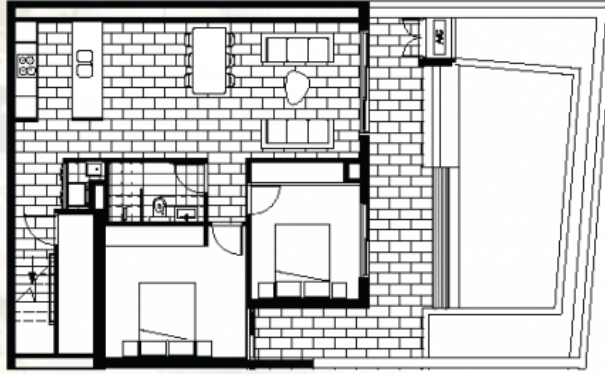
Conveniently located, the apartment is only moments from local amenities and city-bound transport.

Land 134Square Metres

This apartment IS LOCATED AT THE REAR OF THE BLOCK and has been thoughtfully designed and detailed with luxury finishes. YOU MUST REGISTER TO INSPECT BY EMAILING US.

? Reverse c

Apartment No. 2



Lower Ground Floor, 2 bedrooms, 1 bathroom, 1 car space
Internal Area 75 sqm External Area 57 sqm
TOTAL AREA 132 sqm



2/630-634 New Canterbury Rd HURLSTONE PARK, NSW



Plans shown are only indicative of layout. Dimensions are approximate.