



2  1  1 

Victor Kelly Estate Agents

**1/630-634 New Canterbury Rd HURLSTONE PARK, NSW
GROUND FLOOR 2 BEDROOM APARTMENT - TOTAL SIZE
139SQM**

Contact Cherie Kelly
0478680551

Located in 'Fernhill', a boutique development of just 25 apartments. All offers are considered.

Type Unit

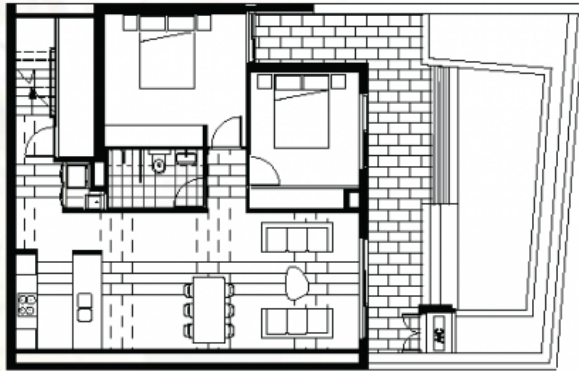
Conveniently located, the apartment is only moments from local amenities and city-bound transport.

Land 139Square Metres

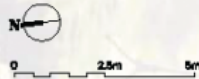
FEATURES the following:

? Tiled throughout, all bedrooms are carpe

APARTMENT No. 1



Lower Ground Floor, 2 bedrooms, 1 bathroom , 1 car space
Internal Area 75 sqm External Area 64 sqm
TOTAL AREA 139 sqm



1/630-634 New Canterbury Rd HURLSTONE PARK, NSW



Plans shown are only indicative of layout. Dimensions are approximate.