



## Victor Kelly Estate Agents

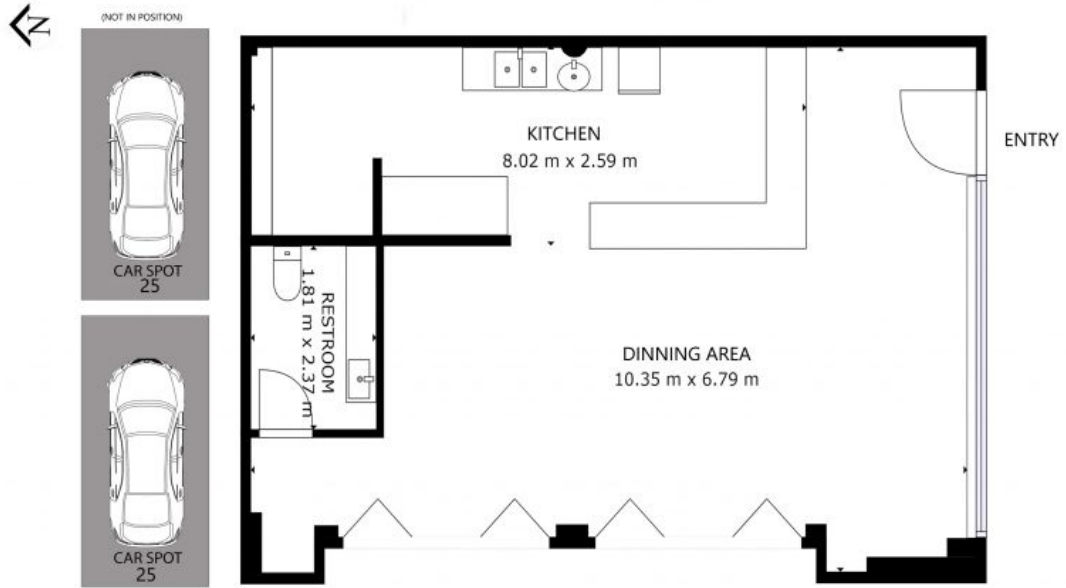
## PETERSHAM, NSW INVESTMENT OPPORTUNITY

**Contact** Cherie Kelly  
0478680551

**Type** Retail

**Land** 99Square Metres

? Outgoings payable by the tenant  
 ? 100% Council Rates  
 ? 100% Water fixed charges  
 ? 100% fire safety  
 ? 100% strata levies  
**FULL REPORT AVAILABLE ON REQUEST**



**VK** VICTOR KELLY  
ESTATE AGENTS

GROSS INTERNAL AREA  
FLOOR 1: 68 m<sup>2</sup>  
TOTAL: 68 m<sup>2</sup>  
SIZES AND DIMENSIONS ARE APPROXIMATE, ACTUAL MAY VARY.

25/301 STANMORE RD,  
STANMORE

**PETERSHAM, NSW**

**VK** VICTOR KELLY  
ESTATE AGENTS

Plans shown are only indicative of layout. Dimensions are approximate.