

Victor Kelly Estate Agents

207/1 Erskineville Road NEWTOWN, NSW HAS BEEN LEASED

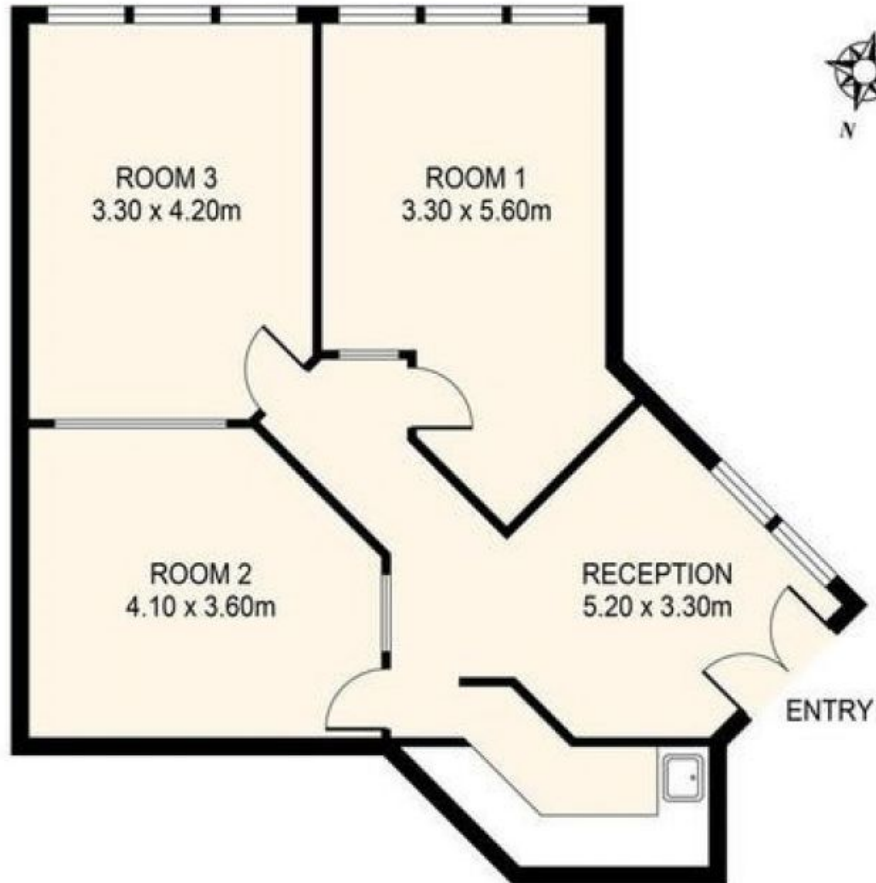
Contact Cherie Kelly
0478680551

Type Offices

Land 62Square Metres

Situated in the well-established Newtown Business Centre, Suite 207/1 Erskineville Road, Newtown presents a prime opportunity footstep from the thriving retail and hospitality hubs on King Street. The space lends itself to professional rooms, with three separate rooms/offices, a reception area, and a kitchenette, and could easily be open-planned depending on intended usage. It offers an area of 62sqm plus secure car space and combines commercial flexibility with attractive Lease terms.

- Featuring:
- An established landmark building
 - Highly visible corner position
 - Three separate rooms
 - Potential for open plan layout
 - Secure car space with access
 - Metres to King Stre



DISCLAIMER: THIS IS FOR ILLUSTRATIVE PURPOSES ONLY.
ALL DIMENSIONS ARE APPROXIMATE AND IT DOES NOT
CONSTITUTE PART OF ANY LEGAL DOCUMENTS.

ADDRESS:

207/1 ERSKINEVILLE ROAD, NEWTOWN

207/1 Erskineville Road NEWTOWN, NSW



Plans shown are only indicative of layout. Dimensions are approximate.