



Victor Kelly Estate Agents

PETERSHAM, NSW PRIME RETAIL INVESTMENT

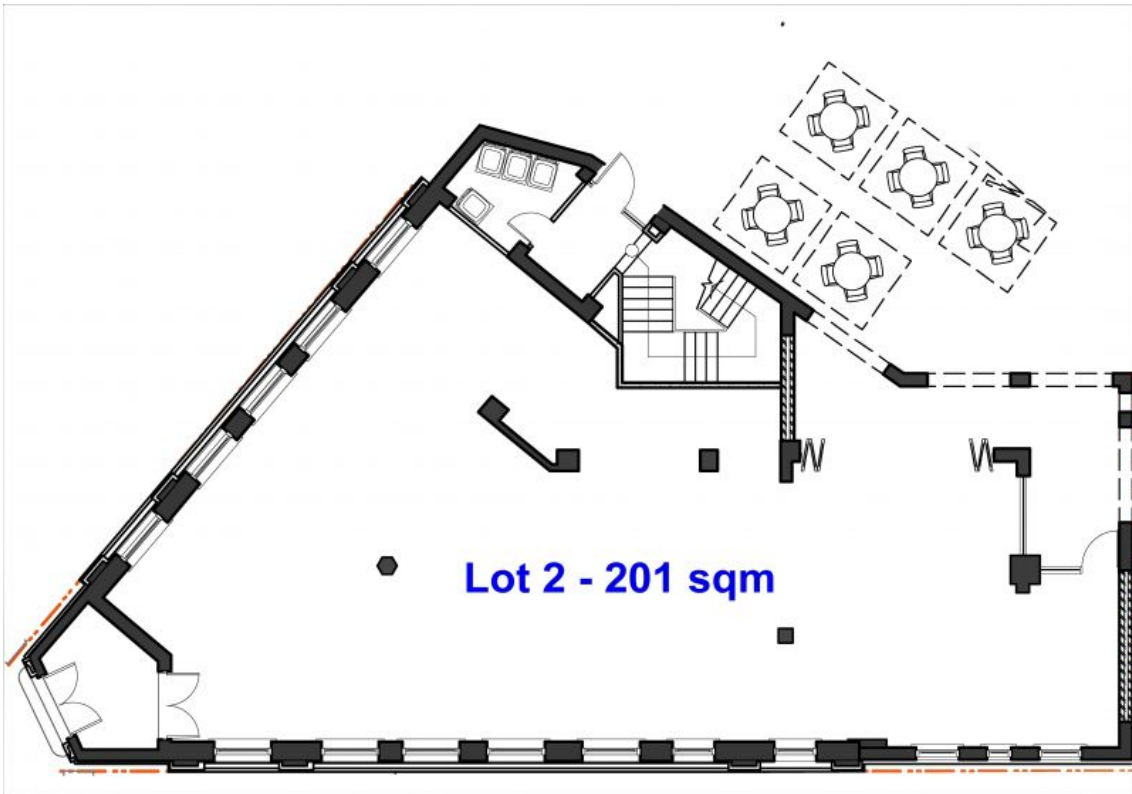
Contact Cherie Kelly
0478680551
Cherie Kelly
0478680551

Fabulous opportunity to purchase in a Heritage Conversion boutique development directly from the Builder. LEASED FOR 5 YEARS WITH A 5 YEAR OPTION COMMENCE 16/09/2019
CURRENT RENT \$67,000 per annum + GST.

Strata Levies \$6,648 pa - Council Rates \$1,493 pa - Water rates \$720 per annum

Type Retail

Land 201Square Metres



PETERSHAM, NSW



Plans shown are only indicative of layout. Dimensions are approximate.